



2415 Quail Drive, Baton Rouge, LA 70808 Main: 225-763-8700
 Toll-Free: 888-454-2001 | Fax: 225-763-8710
 Business Hours: 8:00 a.m. to 4:30 p.m. CST Monday - Friday

Section 504 Accessibility Checklist

Accessible Parking □

**TABLE 1106.1
ACCESSIBLE PARKING SPACES**

TOTAL PARKING SPACES PROVIDED	REQUIRED MINIMUM NUMBER OF ACCESSIBLE SPACES
1 to 25	1
26 to 50	2
51 to 75	3
76 to 100	4
101 to 150	5
151 to 200	6
201 to 300	7
301 to 400	8
401 to 500	9
501 to 1,000	2% of total
More than 1,000	20, plus one for each 100 over 1,000

IBC 1106.5 Van spaces-for every 6 or fraction of six accessible spaces, at least 1 shall be van accessible

Van=96" Access Aisle

Car=60" Access Aisle

Max 2% cross slope

Signage 60" Min above parking measured to bottom of sign

Signage

Accessible entrance identified by International Symbol of Accessibility.

Interior signs-contrasting text, raised or incised, characters 5/8" min but not more than 2".

Mounted on latch side of door with a centerline 54"-66" AFF

Accessible Route □

Continuous & connect functionally related structures, parking, bus stop, dumpsters, mail boxes, laundries, etc.

Min width 36"

Surface firm stable & slip resistant

Changes between ¼" to ½" beveled

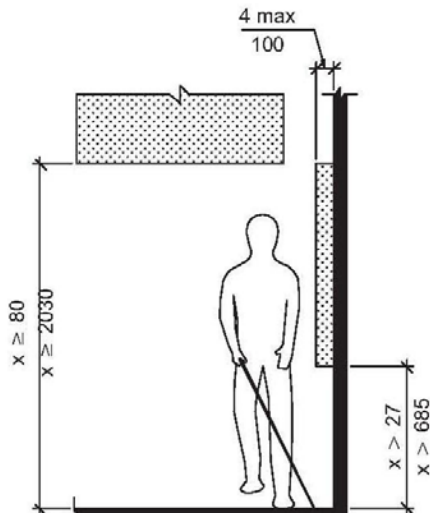
Changes greater than ½" ramped

Max 2% cross slope

Any slope greater than 5% reviewed under ramp provisions

Detectable warnings installed on accessible route when approaching vehicular path 24" wide, full width of path installed 6-8" from curb line

Protruding objects



Ramps



Slope 8.33% max

Firm stable & slip resistant

Cross slope 2% max

36" min width

Must have landings at top & bottom, at turns & must have intermediate landings whenever the rise is more than 30". Landings must be 60" long & 60" x 60" when change of direction occurs.

Ramps longer than 6' must have handrails on both sides complying with ANSI 505. 34"-38" AFF, gripping surface continuous, clearance of 1.5" min from adjacent surfaces & min diameter 1 ¼"-2". Handrails ext top & bottom min 12".

Doors

Landings 60" x 60" min

32" nominal clearance

18" maneuvering clearance front approach on latch side with min depth of 60"

Hardware

Lever or push/pull types

No tight grasping or twisting to operate (use closed fist method to test)

48" max AFF including deadbolts

Opening force 5lbs max

Peephole 43"-51" or broadview type

Threshold ½" max beveled both sides

Community Center/Leasing Office –



On accessible route to throughout Center/leasing office 36" min. Path

Threshold ½ max beveled

Doors

Opening force 5lbs max & closes in 3 seconds or less if closer installed

32" nominal clearance.

Switches & Environmental Controls 48" max AFF

Outlets, cable & telephone 15" min AFF

Public restrooms

If provided, must have one on an accessible route.

Signage-see signage requirements

Door 32" nominal clearance

Lever or push/pull hardware 48" AFF max

5lb max if closer installed

Threshold ½" max beveled

Unobstructed turning space

60" diameter turn clearance or T-shape - 60" X 60" min 36" wide

Urinals-rim 17" max, clear floor space 30" x 48", flush control 44" max

Toilets-Top of seat 17" min- 19" max AFF, centerline 18" from closet wall, clear floor space 56" deep x 60" wide if wall mounted/59" deep x 60" wide if floor mounted, flush control 44" max AFF on wide side of clear space.

Toilet paper dispenser centerline at least 19" AFF. Starting edge, no more than 36" from back wall. Mounted on side grab bar wall.

Grab bars-centered 33"-36" AFF, side bar 42" min located within 12" from corner, rear bar 36" min (within 6" of corner) or 24" min located from centerline of toilet.

Lavatory(sink)-34" max rim AFF, knee space 27" min, clear floor space 30" x 48", under counter protection provided, and faucet controls operable with closed fist.

Mirror- bottom edge 40" max AFF & top edge at least 74" min AFF

Drinking fountain

Clear floor space 30" x 48", knee clearance 27", spout 36" max & controls near front. Second drinking fountain spout shall be 38" min to 43" max.

Laundry Facilities

Min one front loading washer and dryer, clear floor space 30" x 48", controls operable with closed fist and work surface min 30" linear mounted 34" max AFF with knee space of 27".

Mailboxes

Accessible Heights (48" max) AFF with clear floor space 30" X 48"

Dumpsters/Garbage Chutes

On accessible route with door within reach range above 15" and 48" max.

Community Kitchen

Sink 34" max AFF to rim, controls max 24" from front edge and operable with closed fist, clear floor space of 30" x 48", knee space and under counter protection against contact.

Work surface 30" linear min provided. Knee space provided. 34" max AFF.

Upper cabinets with one shelf at 48" and AFF or full length accessible pantry provided.

Stove front controls and self-cleaning oven.

Range hood switch operated with controls in accessible location 48" max AFF.

Dishwasher – clear floor space 30" X 48" min.

Refrigerator – 50% of freezer space below 54"

Dwelling Units Mobility

On accessible route

Continuous & connect functionally related structures, parking, bus stop, dumpsters, mail boxes, laundries, etc.

Min width 36"

Surface firm stable & slip resistant

Changes between ¼" to ½" beveled

Changes greater than ½" ramped

Max 2% cross slope

Any slope greater than 5% reviewed under ramp provisions

Detectable warnings installed on accessible route when approaching vehicular path 24" wide, full width of path installed 6-8" from curb line

Landing 60" X 60" with 18" clear space on latch/approach side

Threshold ½ max beveled

Lever hardware throughout

Peephole 43" – 51" AFF or broadview type

Opening force 51lbs. max to closes in 3 second or less if closer installed

32" min nominal clearance

Accessible route throughout unit 36" min with doors 32" min nominal clearance

Switches to environmental controls 48" max AFF

Outlets, cable and telephone 15" min AFF

Kitchen

60" turn radius or 60" X 60" T-shape min 36" wide under counter with proper knee clearance can be included in T-Shape.

Front controlled stove with self-cleaning oven.

Vent hood switch controlled in accessible location.

Sink 34" max AFF to rim, controls max 24" from front edge to operable with closed fist, clear floor space of 30" X 48" min, knee space and under counter protection against contact

Work surface 30" linear min provided knee space provided. 34" max AFF

Upper cabinets with one shelf at 48" max AFF or full length accessible pantry provided

Dishwasher clear floor space 30" X 48" min

Refrigerator 50% of freezer space below 54"

Bathrooms

Only one must comply

On accessible route with 32" nominal clearance. Pull side of door must have 18" clear floor space unobstructed turning space 60" turn radius or 60" X 60" T-Shape min 36" wide under counter with proper knee clearance can be included in T-Shape

All controls operable with closed fist.

Clear floor space of 30" X 48" min at each fixture

Toilets

Top of seat 17" min – 19" max AFF, centerline 18" from closet wall, clear floor space 56" deep X 60" wide if wall mounted/59" deep X 60" wide if floor mounted, flush control 44" max AFF on wide side of clear space.

Toilet Paper

Dispenser centerline at least 19" AFF. Starting edge, no more than 36" from back wall. Mounted on side grab bar wall.

Grab bars

Centered 33" – 36" AFF, side bar 42" min located within 12" from corner, rear bar 36" min (within 6" of corner) or 24" min located from centerline of toilet.

Lavatory (sink)

34" max rim AFF, knee space 27" min, and under counter protection.

Mirror

Bottom edge 40" max AFF and top edge at least 74" min AFF

Bathtub

Clear floor space (wall mounted lavatory may overlap floor space on foot side.

If forward approach – 48" deep X 60" wide

If side approach – 30" X 60"

Handheld shower spray unit with 60" long hose. Mounted 38" – 48" AFF (adjustable with closed fist)

Controls mounted 38" – 48" AFF, located between open side and centerline of shower and operable with closed fist

Tub Seat – securely mounted

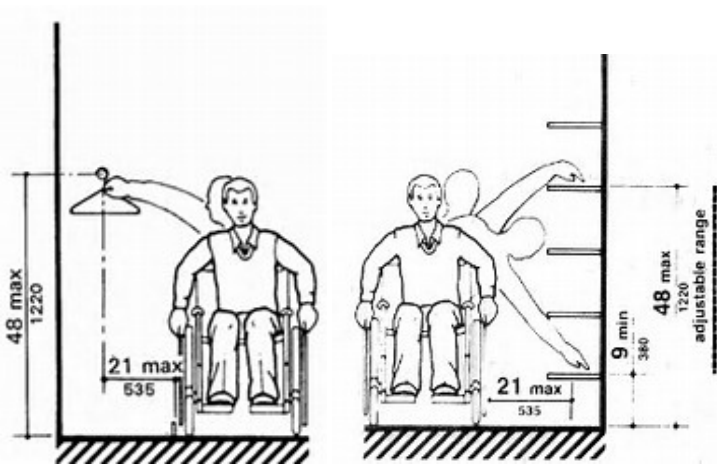
Tub Grab bars centerline 33" – 36" AFF, 1 ¼ - 1 ½ diameter.

Control side 2 - 24" long bars parallel mounted.

Bottom bar 8" – 10" above top of tub

Both bars mounted 12" from control wall foot and 24" from head of tub

Head side 112" bar min

Closets**Sensory**

Audible visual strobe smoke detectors installed.

Audible visual strobe for doorbell and telephone system.